

# ProjectVault ORGMD

ProjectVault ORGMD Database enables users to centrally store, share and manage project-centric contact information in a secure fashion, improving information integrity and data transparency across your business.

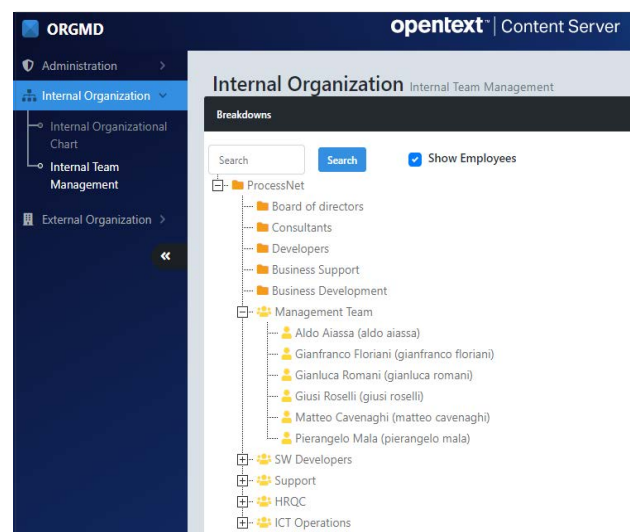
Organizations that use OpenText Content Server to manage structured, document-centric processes are often faced with the challenge of effectively tracking the relationships between contacts and the content they are associated with. ProjectVault Partner & Correspondent Database provides a single, integrated contact management solution for business critical documents and correspondences.

## Manage contact relationships in a centralized database

ProjectVault's ORGMD Database is the essential solution for managing your relationships with both external business counterparts and internal colleagues. Partner and correspondent information is stored in a central database, allowing you to identify, locate and connect your contacts with related documents and other information stored in your Content Server repository. This structured approach guarantees that your team will be able to readily access the latest information, eliminating the need to synchronize personal address books or use Excel spreadsheets to manage your business counterparts' records.

ORGMD is the only end-to-end contact management solution available for Content Server: it allows users to store process and manage contact information according to a hierarchical storage structure.

ORGMD also supports Teams creation for both your internal organization and the external organizations you most frequently interact with.



- Quickly and easily search internal and external contacts
- Increase data transparency across processes and throughout your entire business
- Significantly reduce the amount of time spent managing and sharing contact information

## Improve information quality and consistency by tracking associations between content and contracts

The problem of efficiently tracking the interactions between contacts and the content/messages they shared can be difficult to manage, especially on large projects. ORGMD solves this challenge by bringing transparency and structure into the relationship.

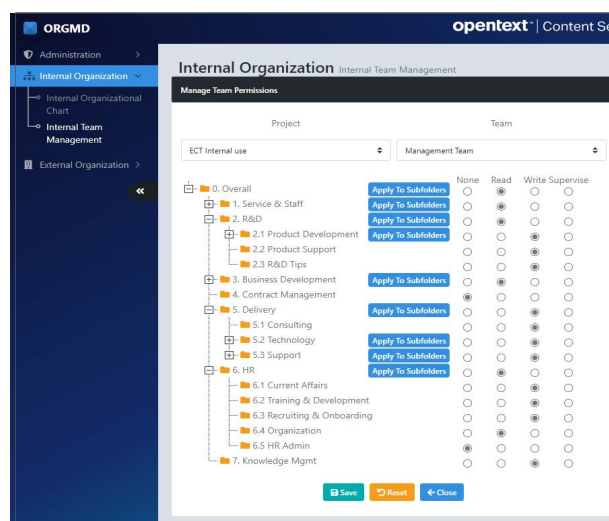
Through the use of extended taxonomies and attributes, ORGMD enables associations to be quickly made between any Content Server item and the business contacts associated with it. Powerful reports capability enable users to search and view relationships, enabling them to quickly drill down through relationship hierarchy's and find the content they need.

## Ensure contact information security

In addition to enhancing the quality and accuracy of contact information, Partner and Correspondent Database enables organizations to enforce stringent information security standards. Any data entered within the database is available to users based on roles and access permissions. By controlling which members of your team can see and update contact information, this enables you to maintain information integrity and data security.

This extension of the standard Content Server permissions model provides both administrative and end-user roles, ensuring that only certain members of your team are able to create, modify or view contact information. In addition, any changes made to a contact's details are audited and versioned allowing you to track changes as they occur over time.

- Track and maintain content and contact relationships
- Native integration with Content Server documents and objects
- Access contact information instantly from any object
- Powerful reporting tools to search for and view sets of related content or people



- Increase correspondent information security and reduce data leaks
- Ensure contact details is only modified by approved users
- Eliminate accidental contact data loss

### Benefits of ORGMD

- Increased transparency and reduced costs associated with managing the relationship between project-related content and contacts
- Increased information security and reduced data leakage risks
- Improved data quality and consistency through a centralized management of contact information
- Faster information accessibility and better decision-making